

Analyse performance - fast
Develop winning strategies
Reach new levels of excellence



Because it's more than just a game

When you're serious about winning

- 4 Looking for the performance edge?
- 4 Want to see what you're doing right? What you're doing wrong?
- 4 Want to be a winner, not a Contender?

Get the SportsCode Gamebreaker digital video analysis system

SportsCode **Gamebreaker's** powerful digital technology puts your performance where you need it most – a click of the mouse away.

Record it, play it, replay it, edit it, then use it to achieve that winning edge.

Go on. Take a closer look – and take your performance to a new dimension. Get SportsCode Gamebreaker.



Technology for Winners

Digital video analysis has become the coaching tool of choice for sports individuals and organisations everywhere.

Using this technology, you can record your performance onto a computer in real-time, then access, replay, edit, re-edit and archive it at the touch of a button. No more videotapes, videotape players and time-consuming tape spooling.

Digital video analysis is the foundation for SportsCode Gamebreaker – a performance analysis tool for any sport and professional performance. The system is already being used around the world in basketball, football (soccer), softball, baseball, netball, rugby union, rugby league, Australian Football League, slalom canoeing, equestrian, water polo, field hockey, ice hockey, table tennis, volleyball and cricket to name just a few of the sports. It applies to any sport.



“ Video has always been so important to my coaching career and our teams here at Duke. It has become even more valuable with Sportstec. Sportstec made an immediate impression on me with its quality, and it has made our entire team more efficient and better overall. We want to be associated with the best, and we believe that we are with Sportstec.

Coach K
Duke Basketball

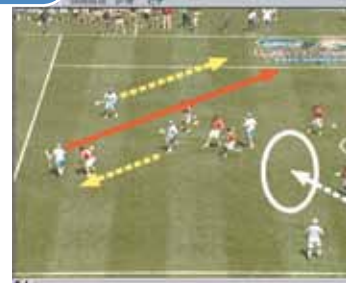
“ Our staff at Texas Tech University has never been involved with a better video system than that of Sportstec.

Bob Knight
Texas Tech University, Men's Basketball, U.S.A.

Stacked Movies



Drawing



Overlay





Here's an example of how SportsCode Gamebreaker works for a new movie:

- 1** Double Click on the SportsCode Gamebreaker icon on the screen
- 2** Create a "Code Input Window." This is the storage point for your "Code Buttons."
- 3** Decide which actions in your performance (the "movie") you want to record ("code") for future reference. Create and label "code buttons" for each action. (For example, you may want to code a particular basketball player, a particular move, or each time a goal is scored) Each action becomes an "instance".
- 4** "Capture" (or record) the movie to the hard drive. At the same time, code the information you need using the code buttons.
- 5** You now have the movie captured, and information about the movie created in a "Timeline". The movie and the timeline are linked together and are a chronological record of the instances you have coded.
- 6** You can now analyse performance according to the information on the timeline. If you want to change the information, add to it or delete from it, it's easy. SportsCode Gamebreaker is completely flexible for your needs.

Technical Support

Sportstec offers a variety of support options to our users. To get the best out of your product, we can deliver on-site training and installation. We will work through best practices and tailor a workflow to guarantee that your analysis will be effective and efficient. For those requiring a high level of support throughout the year, 24/7 phone support with instant messaging and remote desktop services can be purchased. Email, website, and an online forum are available as complimentary services for the life of the product.

Setup Requirements

The minimum computer requirements for SportsCode Gamebreaker are:

- | We recommend you use the latest Apple computers and operating systems to run SportsCode Gamebreaker. We highly recommend adding additional RAM to the computer.

Recommended peripherals include:

- | External Firewire hard drive
- | Panasonic, Sony or Canon digital video cameras

Make it easy on yourself

Talk to your retailer about the SportsCode Gamebreaker package which contains:

- | the SportsCode Gamebreaker software
- | a MacBook or MacBook Pro
- | a digital video camera



“ SportsCode’s simple interface means that coaches and players can scrutinize any area of the game without in-depth training or technical knowledge.

The use of Sportstec products has revolutionised the way we analyse and disseminate information when reviewing team performance and preparing for future games. One of the great strengths of SportsCode is that the user can determine exactly what information is produced by the software.

In a dynamic sporting environment this feature lets us alter the focus of our analysis as our game, player and coaching staff develop.

Gavin Scott
Scottish Rugby Union

“ SportsCode has become an integral player in the University of Bath’s unique contribution to British sport. With 63 sports on offer in the family of sports activities based at the University, SportsCode has been enthusiastically embraced by a variety of codes in the push for sporting excellence across the Southwest region of England.

University of Bath



“ In the world of professional sports any competitive edge that you can get is a huge advantage. With Sportstec and its outstanding software we have been able to improve the way we coach, teach, develop and scout players. All members of our organization from coaches to scouts to the players themselves have benefited from the video editing and analysis tools of Sportstec.

Darcy Regier
Buffalo Sabres General Manager

Common Questions Answered

Here are answers to the most frequently asked questions about SportsCode Gamebreaker.

Why Apple?

Apple computers are ideally suited to working with graphics, especially video.

After I buy the SportsCode Gamebreaker how long will it take before I can be using the system for my game analysis?

We find most users are ready to go after a 1/2 days training on SportsCode Gamebreaker. The ease of use and user friendly interface means that most people can do 90% of the workflow requirements by the end of the first day. The other 10% is achieved very quickly as you explore the functionality and get familiar with the software.

Can SportsCode Gamebreaker be used live at a game, event or performance?

Yes - you can record and code performances using a camera or in-stadium video feed.

Can SportsCode Gamebreaker be used for scouting?

Yes - you can record and code games, events and performances using a camera or in-stadium video feed.



Do I have to buy different systems for each sport I coach?

No - SportsCode Gamebreaker can be used for any type of sport.

Is SportsCode Gamebreaker limited to digital video?

SportsCode Gamebreaker works with both digital and composite video.

Who do I contact if I have a technical question or problem?

Firstly, contact your supplier, or log into the Sportstec web site and log a technical question for us to answer.

Can we recall and review past performances at any time?

Yes – you can view any performance. It is very simple to analyse and compare past events from whatever time period you have available. You can combine a number of games for review.

How long after an event can we get game analysis tapes?

SportsCode Gamebreaker's real-time technology means it's possible to have the data ready for recording within minutes of the event.

Get in your game with SportsCode Gamebreaker

SportsCode Gamebreaker uses powerful software and digital video technology to gather valuable information on individuals and teams – including the competition. Use it during performance for comparisons and fine-tuning, and afterwards to track the development of individual players or teams.

SportsCode Gamebreaker is designed to help you:

- | check out the strengths and weaknesses in the opposition
- | adapt your performance to win
- | identify team strengths - and enhance them
- | improve individual actions and reactions
- | test the effectiveness of combinations and manoeuvres
- | compare speed - and technique-related performances

Just load SportsCode Gamebreaker onto your system and go - it's highly portable, easy to use and runs on a standard Apple platform. Created for coaches and players, there's no need for special equipment or extensive training; SportsCode Gamebreaker simply goes where you go - perfect for team meetings or one-to-one sessions.

SportsCode Gamebreaker's specialist features

Get SportsCode Gamebreaker and you can:

- | record performances (including the competitors) as and when they happen – make on-the-spot decisions, or save the recording for editing and post game analysis
- | view any part of the performance instantly – no more wasted time spooling through video footage to find the right place
- | edit material on the spot and re-edit as often as you wish
- | move forwards or backwards in one-second or 10-second increments at the touch of a button
- | select and replay individual video frames to see exactly where people are in repeated, pressured situations
- | create a chronological record of your performance – and print it out if you wish
- | produce individual “movies” and presentations for players or performances.
- | combine “movie” files to review performance over a longer period looking for trends, strengths and weaknesses

SportsCode Gamebreaker in action

SportsCode Gamebreaker is easy to use – everything's just a click away...

- | The "Button window" is the starting point for SportsCode Gamebreaker. It contains "code buttons" which you label with specific performance actions (such as a "slam dunk" in basketball) that you need for future reference.
- | You can create code buttons before or after recording the performance. A recorded performance is called a "movie".
- | As you record the movie (or afterwards if you prefer), use the buttons to "code" specific events in the performance - these are called "instances".
- | You can program SportsCode Gamebreaker to add time to the beginning and end of each instance when it's being coded – so you have complete control over the duration of each instance.
- | The code button labels and information then become part of the SportsCode Gamebreaker "timeline" – it's from here that you can view and edit the movie to your heart's content!

You can:

- | create, add, delete or change instances (informationfromthecodebuttons)
- | change, add, move , delete, copy and sort code rows
- | play and move within a movie or an instance
- | create and save movies of selected instances



“The thing we enjoy most about the Gamebreaker system is how easy it is to use AND teach someone to use. I have used a few different kinds of editing programs and this one is by far the most user-friendly. It's completely customizable depending on who is using the program. The key strokes I feel comfortable with while coding are not the same ones our manager is comfortable using. It took about 10 minutes to create a button sequence he liked and now we both can code using our own commands and still get the same great result of video quality. Having the ability to code video “live” gives us the flexibility to give our athletes immediate feedback. We not only use the system to break down opponent video, but in our practice gym by coding during specific drills. We can stop the drill, show the athlete corrections they need to make or reinforce positive play, then step back on the court to implement what we have just shown them on video. All within 5 or 10 minutes.

Another advantage is the ability to make highlight videos, motivational videos using clips, or All-American videos very quickly and easily. It saves our staff time and effort so we can focus on other things with our team.

Fran Flory,
Head Volleyball Coach,
LSU



SportsCode

Designed for performance

SportsCode Gamebreaker is a member of the SportsCode range of products which have been designed to help coaches and trainers boost performance at all levels.

ELITE

SportsCode Elite is a highly customized version of SportsCode Pro for organizations planning extensive use among several networked users.

PRO

SportsCode Pro is the ultimate coaching tool, designed for the full range of performance disciplines.

PLAYER

SportsCode Player is a 'play-only' application to be used in conjunction with SportsCode Pro or SportsCode Elite. SportsCode Player enables athletes to review edited SportsCode files on their own machine in their own time.

Stream

Video streaming has never been easier than with SportsCode Stream! Built on a secure, reliable foundation, SportsCode Stream empowers coaches, players and fans to view and analyse video clips across the internet.

CODA

Don't need to capture and review video footage live, then CODA is perfect for you! Designed to work in conjunction with any SportsCode video analysis system, CODA gives you the ability to increase your coverage at minimum costs. CODA runs on palm size PDA's and enables you to set up user-defined templates for live coding. It is so simple to use - just point and touch!



Sportstec - Performance Technology Specialist

Sportstec is a leading provider of sporting technology designed to maximize individual and team performance.

The Sportstec range of sophisticated, innovative products has been developed and tested by specialists in sports science, training and medicine. They know and understand the rigorous demands of the sporting environment - and the importance of the competitive edge.

The result is a suite of products designed to meet the exacting demands of players, coaches and sporting organizations all over the world. Each exploits leading-edge technology to test and analyse performance, empowering individuals and teams to seize new opportunities to improve – and win.





Sportstec Australia

19-22/6A Prosperity Parade
Warriewood NSW 2102

T: +61 2 9979 1700
F: +61 2 9979 5522

Sportstec New Zealand

T: +64 027 2249 553

Sportstec USA

2310 E. Ponderosa Ave.
Suite 24
Camarillo
CA 93010

T: +1 805 383 9693
F: +1 805 383 0525

Sportstec Europe

Buoparc Bât E
18 av Jacques Réattu
13009 Marseille
France

T: +33 4 91 16 67 16
F: +33 4 91 16 67 20

Sportstec
United Kingdom

1st Floor,
E2 Capel Hendre
Industrial Estate
Capel Hendre
Ammanford
Carmarthenshire
SA18 3SJ
United Kingdom

T: +44 1269 843 382
F: +44 1269 843 592

Sportstec China

Room 502,
Da Wang Xie Zi Lou,
No.12, Xi Da Wang Lu,
Chaoyang District,
Beijing,
China 100124

T: +86 10 8589 3363
F: +86 10 8589 0944

